

# ABE7ACC11

connection sub-base accessory - redundant input  
sub-base

Product availability: Non-Stock - Not normally stocked in distribution facility

Price\*: 135.00 USD



## Main

Accessory / separate part designation	Redundant input sub-base
Accessory / separate part destination	PLC
Accessory / separate part category	Connection accessories
Accessory / separate part type	Splitter sub-base
Range of product	Modicon ABE7
Sub-base type	Redundant input sub-base
Number of channels	16
Quantity per set	Set of 1

## Complementary

Channel splitting	2 x 16
Net weight	0.17 Lb(US) (0.075 kg)

## Ordering and shipping details

Category	22375 - INTERFACE MODULE(ABA,R,S)
Discount Schedule	CP2
GTIN	03389110864748
Nbr. of units in pkg.	1
Package weight(Lbs)	4.02 Oz (114 g)
Returnability	No
Country of origin	LV

## Packing Units

Unit Type of Package 1	PCE
Package 1 Height	2.83 In (7.2 cm)
Package 1 width	3.15 In (8 cm)
Package 1 Length	3.74 In (9.5 cm)
Unit Type of Package 2	S03
Number of Units in Package 2	24
Package 2 Weight	7.14 Lb(US) (3.24 kg)

Package 2 Height	11.81 In (30 cm)
Package 2 width	11.81 In (30 cm)
Package 2 Length	15.75 In (40 cm)

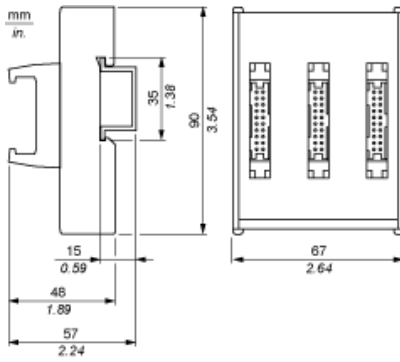
### Offer Sustainability

California proposition 65	WARNING: This product can expose you to chemicals including: Lead and lead compounds, which is known to the State of California to cause cancer and birth defects or other reproductive harm. For more information go to <a href="http://www.P65Warnings.ca.gov">www.P65Warnings.ca.gov</a>
REACH Regulation	<a href="#">REACH Declaration</a>
REACH free of SVHC	Yes
EU RoHS Directive	Pro-active compliance (Product out of EU RoHS legal scope) <a href="#">EU RoHS Declaration</a>
Mercury free	Yes
RoHS exemption information	<a href="#">Yes</a>
China RoHS Regulation	<a href="#">China RoHS Declaration</a>
WEEE	The product must be disposed on European Union markets following specific waste collection and never end up in rubbish bins.

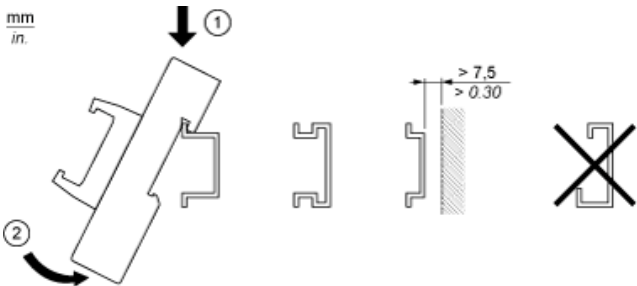
### Contractual warranty

Warranty	18 months
----------	-----------

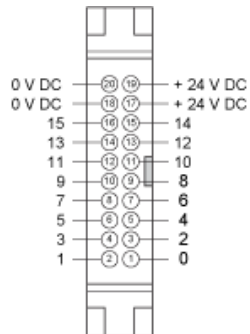
Dimensions



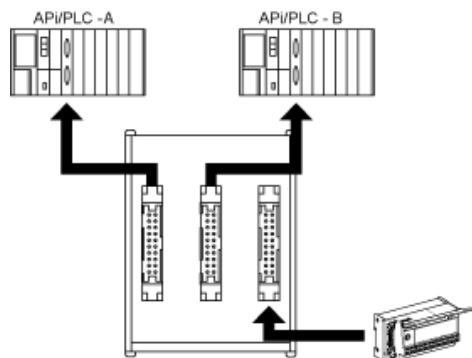
Mounting



## HE10 16 Channels



## Wiring Diagram



Product Life Status : **Commercialised**